

burks®

brands you trust.

BPV Series

Capacities to 550 GPM
Heads to 1350 Feet



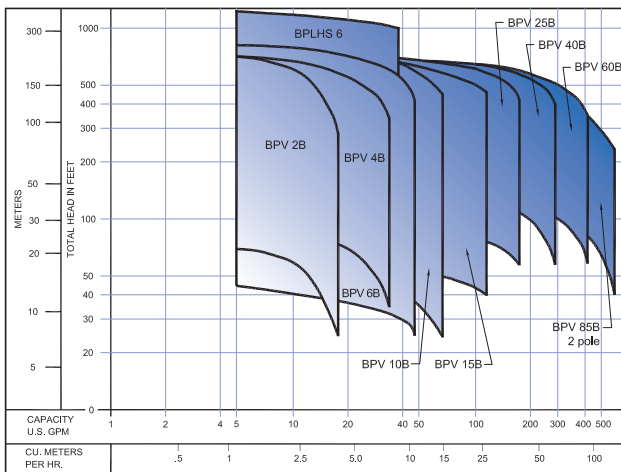
BPV Series (304 SS) BPVS Series (316 SS)

Shaft Sealing

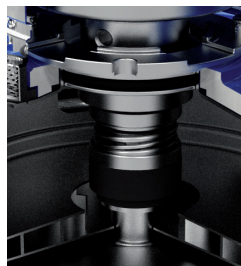
Mechanical seal available in several material combinations for many applications. For models with motors larger than 7½ hp, a cartridge version is provided, which permits seal changes without removing the motor.



Performance Curve



Cartridge Mechanical Seal



Easy Access Mechanical Seal



Shroud O-Ring Mechanical Seal



Features

Stainless Steel Pump Shaft

Double flat face shaft provides long lasting impeller/shaft integrity.

Suction/Discharge Casing

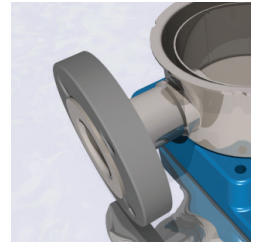
Entire housing made of stainless steel. Flange connections are available in all sizes.

Stainless Steel Diffuser

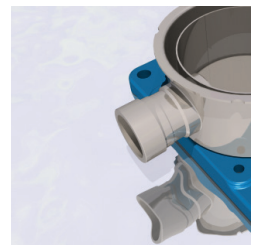
Special design reduces internal losses, which improves the efficiency of the pump.

Sleeve Sealing

Sleeve construction ensures total compensation of thermal expansion. O-ring grooves designed for optimal sealing.



ANSI Class
250/300 Flange



Optional
Victaulic® Coupling



Bleed plug is
engineered to ensure
safe purging of air.

The BPVCF configuration is dimensionally interchangeable with the BPVF series. It is equipped with EPDM E-425 can O-rings for fail-safe operation during extreme temperature changes.





A Crane Co. Company

PUMPS & SYSTEMS

Crane Pumps & Systems

420 Third Street
Piqua, Ohio 45356
(937) 778-8947
Fax (937) 773-7157
www.cranepumps.com

Crane Pumps & Systems Canada

83 West Drive
Brampton, Ont. Canada L6T 2J6
(905) 457-6223
Fax (905) 457-2650



© 2014 Crane Pumps & Systems, Inc.
A Crane Co. Company
Printed in U.S.A.
BK-BPV - Rev. D (4/14)



brands you trust.

BARNES®

burks®

DEMING®

WEINMAN®



PROSSER®