



There must be
3600 easy ways
to put these
ultra-reliable
workhorses to use.

Roper Pumps

3600

Series

Trouble-Free Versatility



The leading force behind liquids.

Applications

- Mixing, blending, recirculating, and transferring heavy, viscous material in either a fixed or mobile transfer application inventory to a minimum.
- Ideal for gasoline, asphalt molasses, ink, roofing compound, and oils

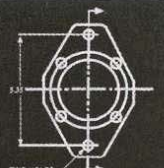
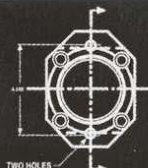
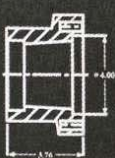
Features

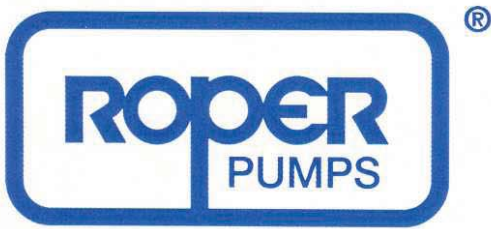
- Heavy duty cast iron helical gear pumps
- Bi-directional, self-priming
- Differential pressures to 125 psi
- Up to 468 gpm
- Standard operation up to 212°F
- Can be built up to operate up to 450°F
- Maintenance-free durability

Options

- Through ports or angled ports; 2-sided or top and side configuration
- Threaded ports or flanged, tapped port connections
- Internal relief valve and integral gear reducer
- Outboard bearing, depending on drive and seal arrangements
- Materials - Iron and Carbon Bearings; Stainless Steel Gears and Shafts; Delrin® Idler Gears for the 48 model

Delrin® is a registered trademark of E.I. duPont de Nemours Co. (Inc.)





Roper Pump Company
 P.O. Box 269 • Commerce, GA 30529
 Toll Free: 1-800-876-9160 • Fax: 706-335-5490
 e-mail: sales@roperpumps.com

Visit Us On The WorldWide Web
www.roperpumps.com

3600 Series

Model	Theoretical Capacity	Maximum Speed	Maximum Flow at Maximum Speed (0 Discharge Pressure)	Maximum Pressure	Port Connection
3611/3711	.11GPR(416.4 CC/REV)	750 RPM	82.5GPM (18.6 M ³ /HR)	125 PSI (8.6 Bar)	2" NPT Flange
4611/4711	.11GPR(416.4 CC/REV)	750 RPM	82.5GPM (18.6 M ³ /HR)	125 PSI (8.6 Bar)	2" NPT Flange
3617/3717	.17GPR(643.5 CC/REV)	750 RPM	127.5GPM (28.8 M ³ /HR)	125 PSI (8.6 Bar)	2" NPT Flange
4617/4717	.17GPR(643.5 CC/REV)	750 RPM	127.5GPM (28.8 M ³ /HR)	125 PSI (8.6 Bar)	3" NPT Flange
3622/3722	.22GPR(832.8 CC/REV)	750 RPM	165GPM (37.2 M ³ /HR)	125 PSI (8.6 Bar)	3" NPT Flange
4622/4722	.22GPR(832.8 CC/REV)	600 RPM	165GPM (37.2 M ³ /HR)	125 PSI (8.6 Bar)	4" NPT Flange
3632/3732	.32GPR(1211.33 CC/REV)	900 RPM	288GPM (65.4 M ³ /HR)	125 PSI (8.6 Bar)	3" NPT Flange
3635/3735	.35GPR(1324.89 CC/REV)	600 RPM	222GPM (50.4 M ³ /HR)	125 PSI (8.6 Bar)	3" NPT Flange
3643/3743	.43GPR(1627.73 CC/REV)	900 RPM	387GPM (87.9 M ³ /HR)	125 PSI (8.6 Bar)	3" NPT Flange
3648/3748	.52GPR(1817.0 CC/REV)	900 RPM	468GPM (106.2 M ³ /HR)	125 PSI (8.6 Bar)	4" NPT Flange
3658/3758	.58GPR(2195.53 CC/REV)	600 RPM	365GPM (82.9 M ³ /HR)	125 PSI (8.6 Bar)	4" NPT Flange
4658/4758	.58GPR(2195.53 CC/REV)	600 RPM	365GPM (82.9 M ³ /HR)	125 PSI (8.6 Bar)	4" NPT Flange

GEAR RATIOS AND CAPACITIES FOR GHB UNITS

	MOTOR	GEAR	PUMP	MAXIMUM PERMISSIBLE		MOTOR	GEAR	PUMP	MAXIMUM PERMISSIBLE
	RPM	RATIO	RPM	HP		RPM	RATIO	RPM	HP
3611 through 4722	1150	5.66:1	250	5.5	3632 through 4758	1150	5.66:1	203	8.5
		4.88:1	290	6.5			4.88:1	235	10.0
		4.26:1	360	8.0			4.26:1	270	11.0
	1750	5.66:1	380	8.5		1750	5.66:1	309	13.0
		4.88:1	445	10.0			4.88:1	360	15.0
		4.26:1	545	10.0			4.26:1	410	15.0
3450*	5.66:1	750	10.0	3450*	5.66:1	609	15.0		

* 3450 rpm motors are used in handling low viscosity lubricating liquids

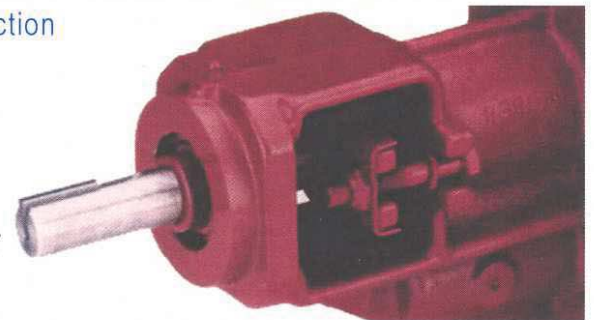
Key Features

Characteristics

- Right angle port design
- Bi-directional rotation
- Iron or Carbon Bushing Options
- Mechanical Seal Options

Materials of Construction

- Cast Iron Housing
- Steel Shaft
- Bronze Bearings
- Hardened Iron Gears
- Delrin® Idler Gears for the 32 and 43 models



Delrin® is a registered trademark of E.I. duPont de Nemours Co. (Inc.)

