

SPECIFICATION DATA



Super
T SERIES

BASIC SELF-PRIMING CENTRIFUGAL PUMP



Model: T3A60S-B

Various Patents Apply

PUMP SPECIFICATIONS

Size	3" x 3" (76 mm x 76 mm) NPT - Female
Impeller Type	Semi-Open, Two Vane
Solids-Handling Capability	2 1/2" (63,5 mm) Spherical Diameter
Seal Type	Cartridge Type, Mechanical, Oil-Lubricated, Double Floating, Self-Aligning
Radial Bearing	Open Single Row Ball
Thrust Bearing	Open Single Row Ball
Bearing and Seal Cavity Lubrication	SAE 30 Non-Detergent Oil
Maximum Operating Pressure	86 psi (593 kPa)*
Max Temp of Liquid Pumped	160°F (71°C).*

PUMP MATERIALS

Casing	Gray Iron 30
Impeller	Ductile Iron 65-45-12
Impeller Shaft	Alloy Steel 4150
Shaft Sleeve	Alloy Steel 4130
Seal: Stationary Face	Silicon Carbide
Rotating Face	Silicon Carbide
Elastomer	Fluorocarbon FKM, (Viton® or Equivalent)
Replaceable Wear Plate:	Carbon Steel ASTM A36
Removable Adjustable Cover Plate	Gray Iron 30
Removable Inspection Cover Plate	Gray Iron 30 – 12 lbs. (5,4 kg.)
Flap Valve	Neoprene with Nylon and Steel Reinforcing
Seal Plate	Gray Iron 30
Bearing Housing	Gray Iron 30
Flanges	Gray Iron 30
Gaskets	Buna-N, with Compressed Synthetic Fiber, Vegetable Fiber, PTFE, Cork and Rubber
O-Rings	Buna-N
Hardware	Standard Plated Steel

*Consult Factory for Applications Exceeding Maximum Pressure and/or Temperature Indicated.

Standard Equipment: Brass Pressure Relief Valve, Bearing and Seal Cavity Oil Level Sight Gauges.

Optional Equipment: Automatic Air Release Valve, Metal Bellows Seal, 120V/240V Casing Heater, High Pump Temperature Shutdown Kit, Drain Kit, Gauge Kit.
Suction and Discharge Spool Flanges:

- 3" ASA (Specify Model T3A60S-B /F)
- 80 mm DIN 2527 – PN 16 (Specify Model T3A60S-B /FM).



Shown with Optional Suction and Discharge Spool Flanges (Available in ASA or DIN Standard Sizes).

Super T Series Features and Benefits

Easy To Service And Maintain - Pump Is Mounted Above Liquid Being Pumped With Only The Suction Line Down In Liquid.

Dual Bearing Protection – An Atmospheric Barrier Along With Two Lip Seals Provide Additional Protection Of The Pump Bearings (Not Available On 2" Models).

Inspection Cover – Patented, Lightweight Inspection Cover For Easy Access To The Impeller Without Removing The Entire Backcover plate Or Piping. (2" – 8" Models)

5 Year Super T Series Warranty

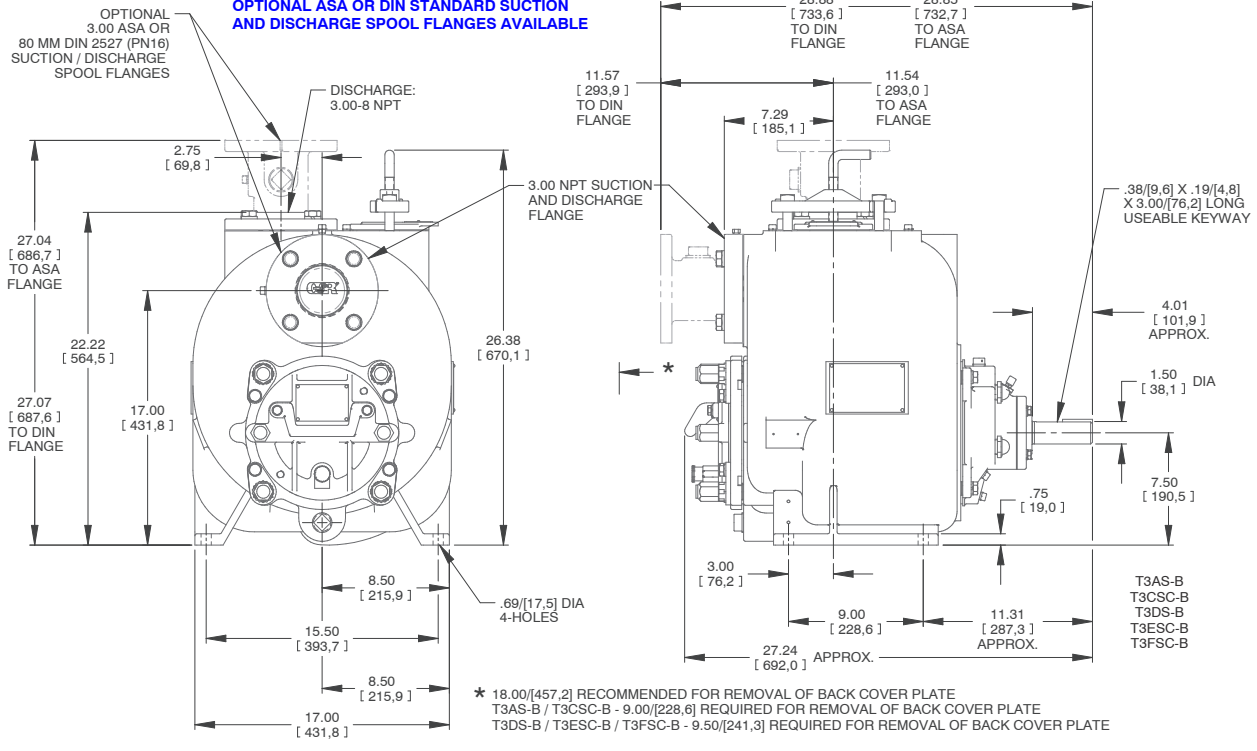
Up To 3" Diameter Spherical Solids Handling (4" – 10" Models).

Removable Rotating Assembly – The Entire Rotating Assembly Can Be Removed Without Disturbing The Pump Volute Or Piping Allowing The Rotating Assembly To Be Easily Repaired Or Quickly Replaced With A New Ready To Drop In Assembly.

APPROXIMATE DIMENSIONS AND WEIGHTS

NET WEIGHT	437 LBS. (198 KG.)*
SHIPPING WEIGHT	465 LBS. (211 KG.)*
EXPORT CRATE	13.6 CU. FT. (0,39 CU. M.)

*Add 10 LBS. (4,5 KG.) w/each spool flange



* 18.00/[457,2] RECOMMENDED FOR REMOVAL OF BACK COVER PLATE
 T3AS-B / T3CSC-B - 9.00/[228,6] REQUIRED FOR REMOVAL OF BACK COVER PLATE
 T3DS-B / T3ESC-B / T3FSC-B - 9.50/[241,3] REQUIRED FOR REMOVAL OF BACK COVER PLATE

